

# AVS TWO-WAY COAXIAL

## CEILING SPEAKER

**DT SERIES**  
**MORE CLEAR & LOUDNESS**

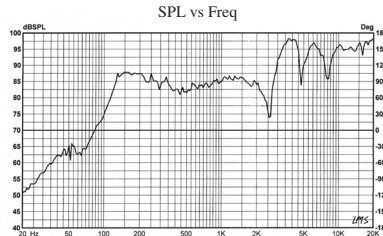
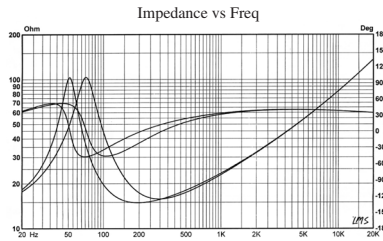
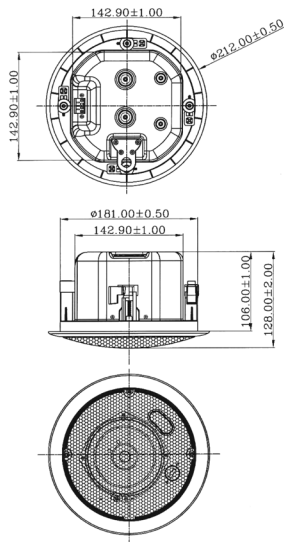


**Polypropylene Woofer**  
**PEI Dome Tweeter**  
**Directional Horn**

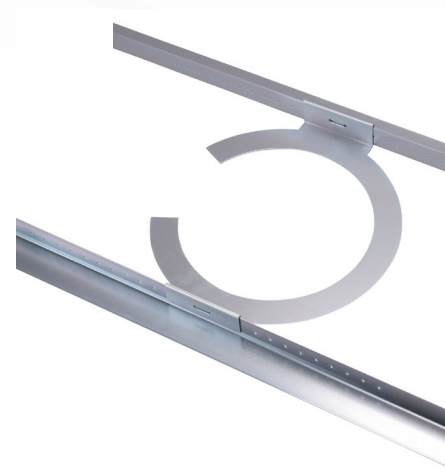
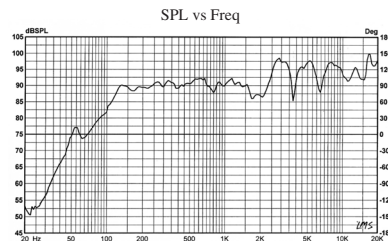
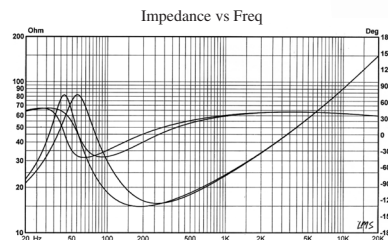
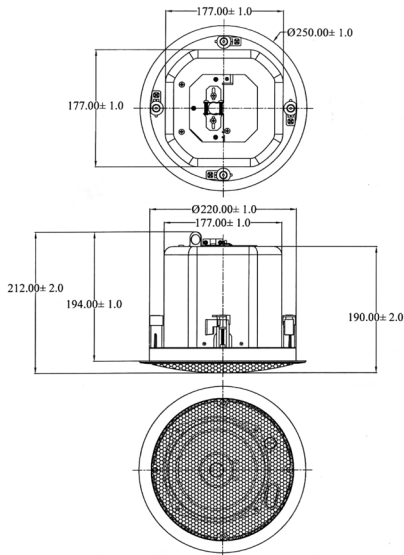


email : [marketing@avshk.com](mailto:marketing@avshk.com) website : <http://www.avshk.com>

## AVS-412DT



## AVS-612DT



## SPECIFICATIONS

Model	AVS-412DT	AVS-612DT
70V Power Taps	1.25 / 2.5 / 5 / 10W	7.5 / 15 / 30W
100V Power Taps	2.5 / 5 / 10 / 20W	15 / 30 / 60W
Power Handling (16Ω)	30W	60W
P.M.P.O.	60W	120W
Impedance	16Ω ± 15% at 350 Hz 1.ØV	16Ω ± 15% at 350 Hz 1.ØV
S.P.L.	Mean Value at 85 ± 2dB	Mean Value at 90 ± 2dB
Freq. Response	80 ~ 20KHz	50 ~ 20KHz
Distortion	5% Max	5% Max
Transducer		
Woofers	4"	6"
Tweeter	20mm PEI Dome Tweeter	20mm PEI Dome Tweeter
Speaker Color	White	White
Speaker Dimension	Dia 181mm x 106mm (H)	Dia 220mm x 190mm (H)
Speaker Weight	1.9 kg	3.6 kg

